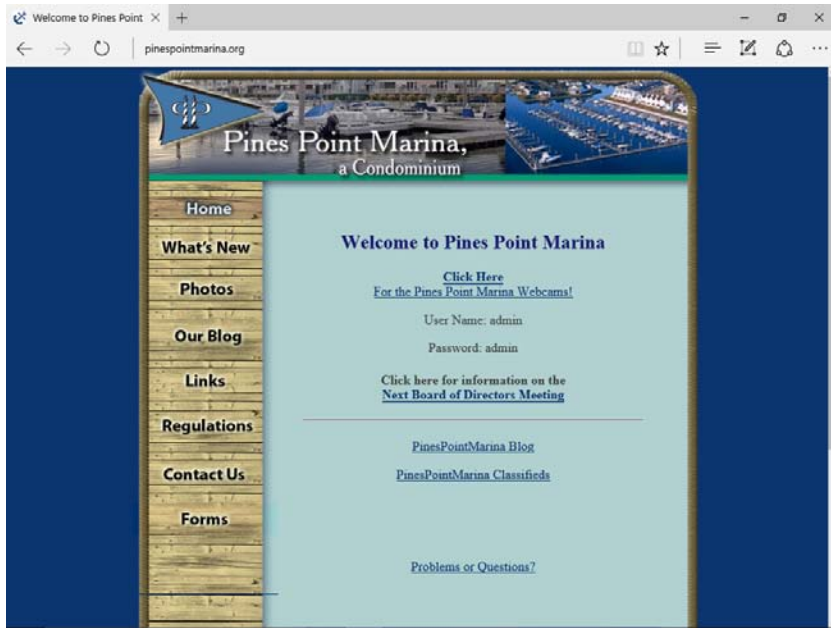
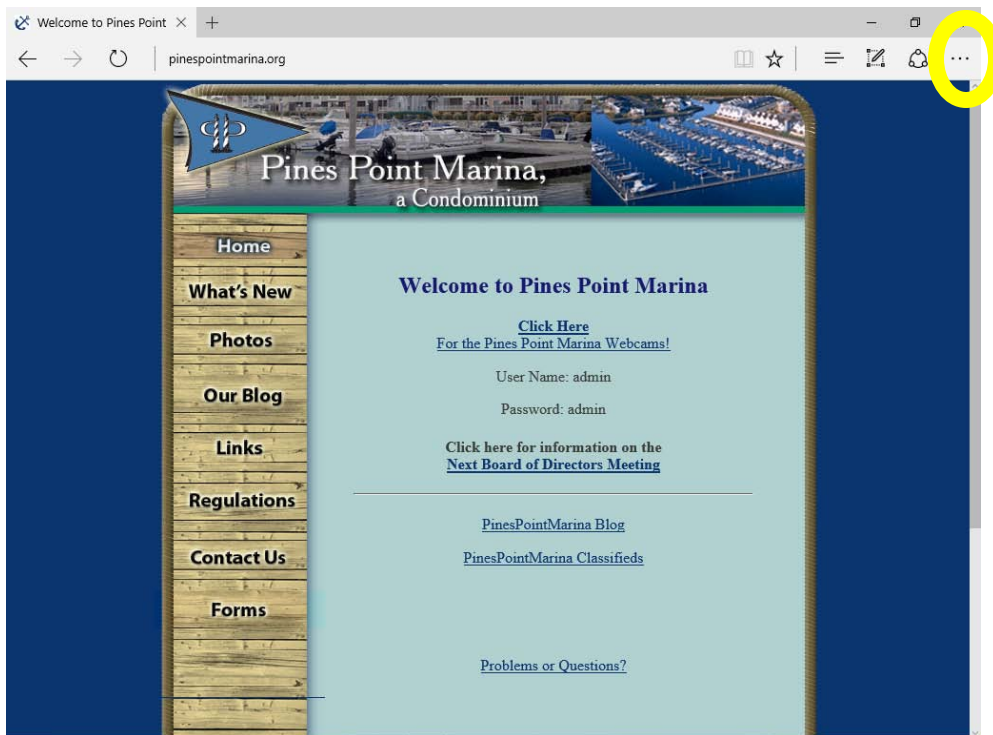


For Windows 8, 10 +

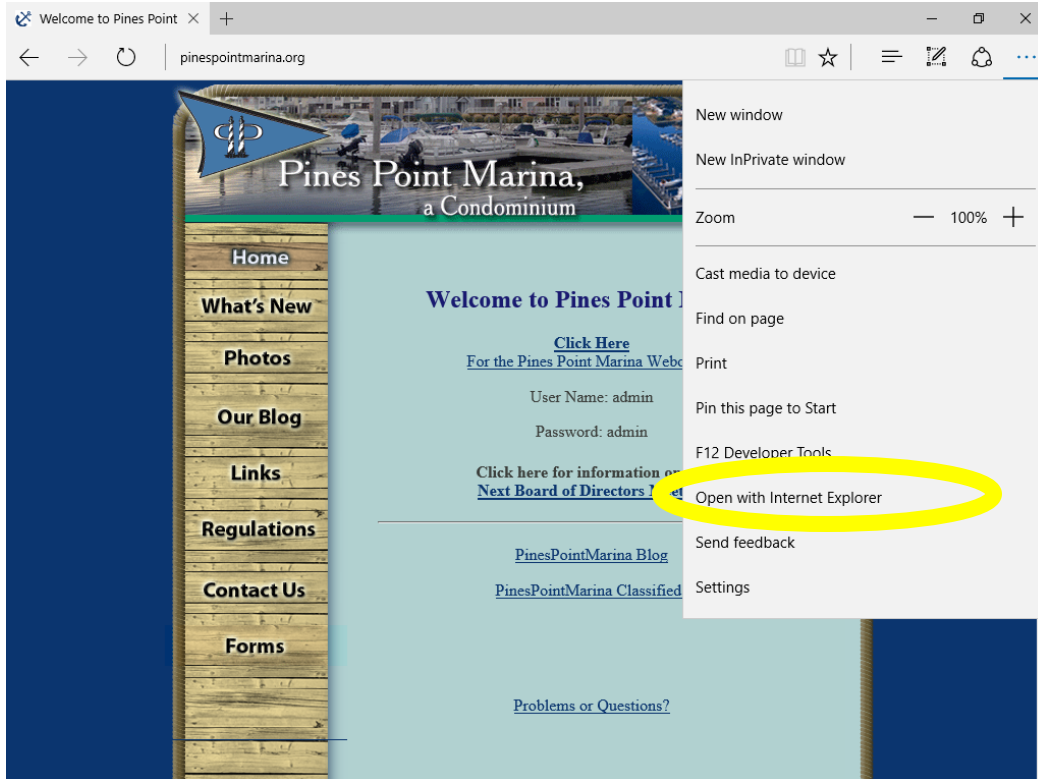


Go here first in Microsoft edge. www.pinespointmarina.org

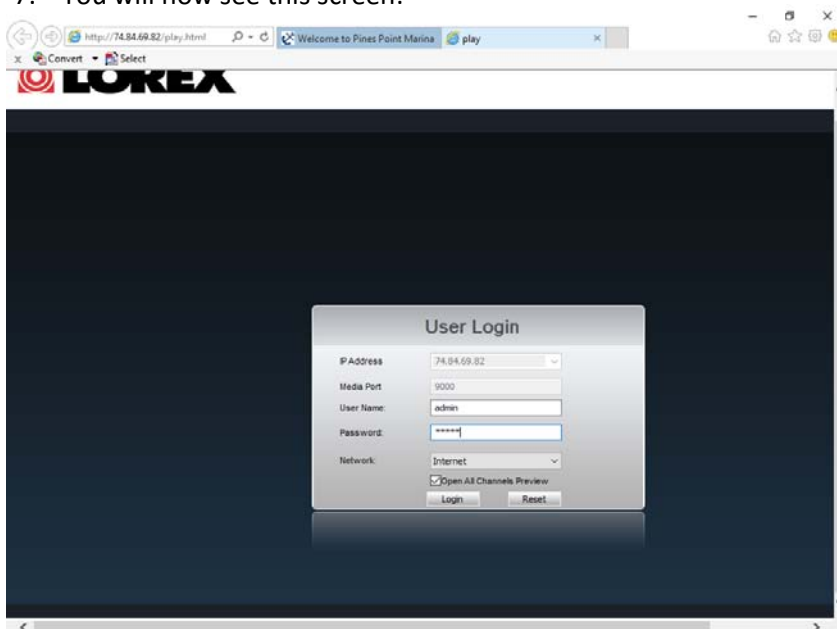
Then:



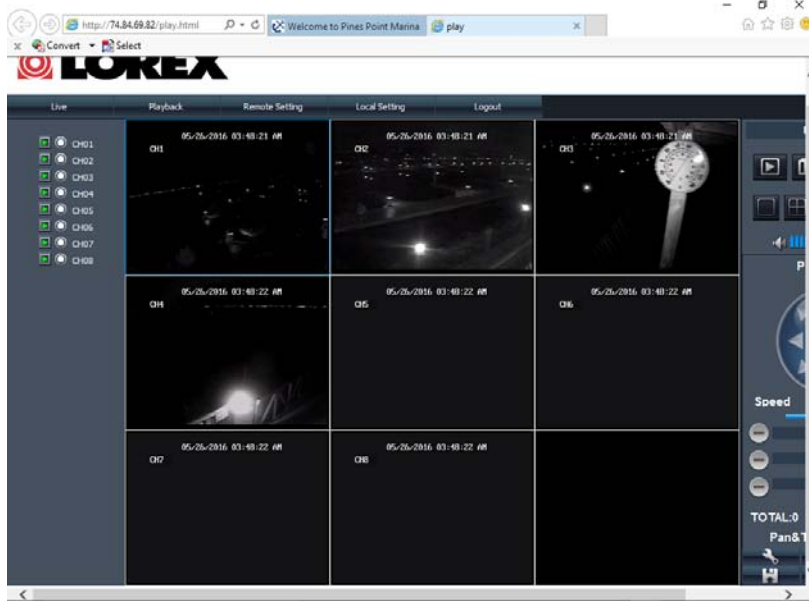
Click on the 3 dots where the yellow circle is above



1. Once the dropdown menu appears click "open with internet explorer"
2. Lorex will open up and then the site will prompt you to install the hidvr plug in.
3. Click ok and the plug in will install. (this may take a few minutes)
4. After you give permission to the computer to make changes, everything will cease and give you an error.
5. Close Microsoft edge completely.
6. Restart edge and repeat the above steps (go to website and then click the 3 dots to start in Microsoft explorer) The hidvr plug in is now installed and active
7. You will now see this screen:



Type in the word “admin” into the username and password sections. (this will log you on to the cameras?)



Wallah!! There you go! Sorry it's a night shot as an example! Its 3 A.M. in the morning! LOL!

Enjoy and good luck!!