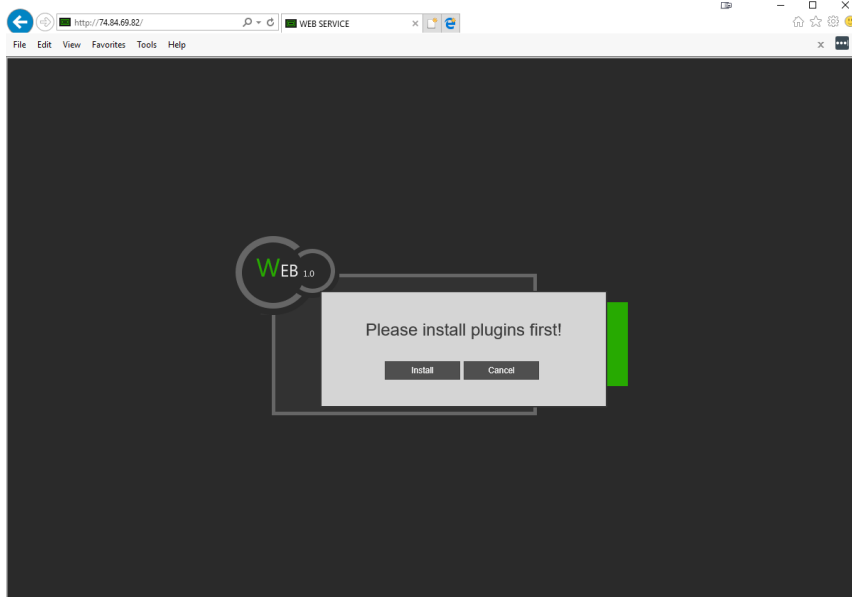


Pines Point Marina

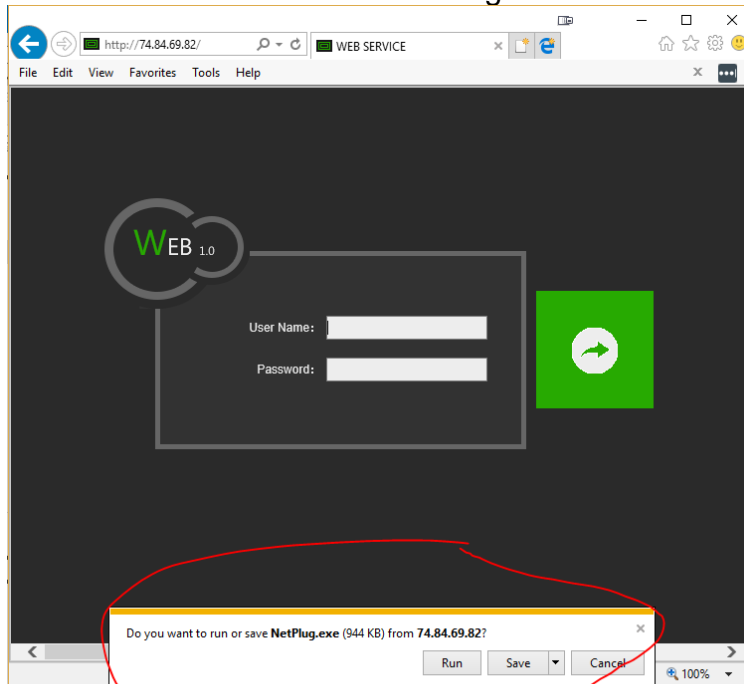
Accessing the marina cameras from your computer

NOTE – This will ONLY work with Internet Explorer – therefore it will only work on a Microsoft Windows computer.

- 1) Open Internet Explorer and type <http://74.84.69.82/> in the address bar
You will see this message:

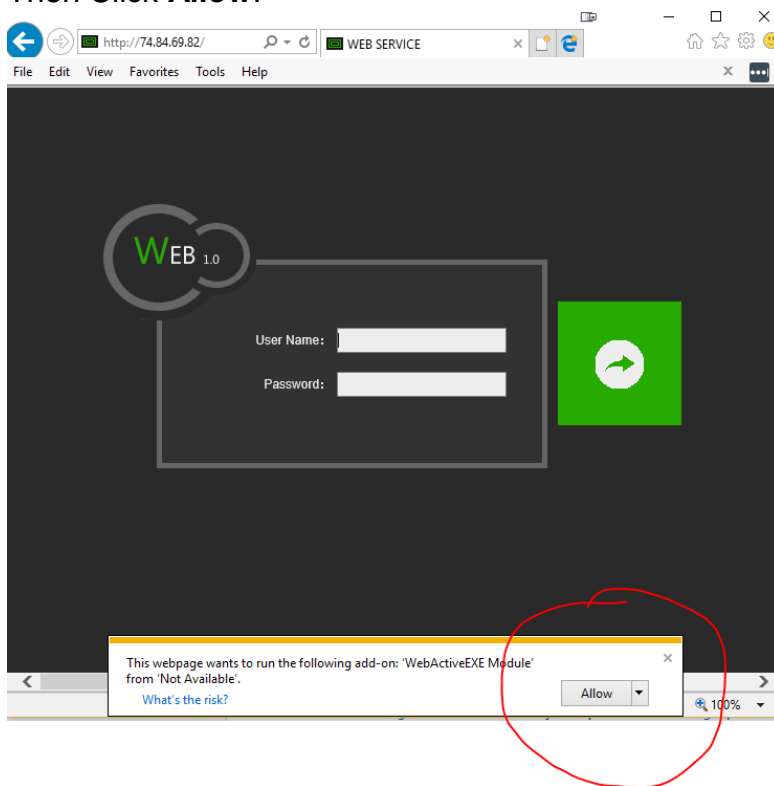


Click Install – You will then see this message:

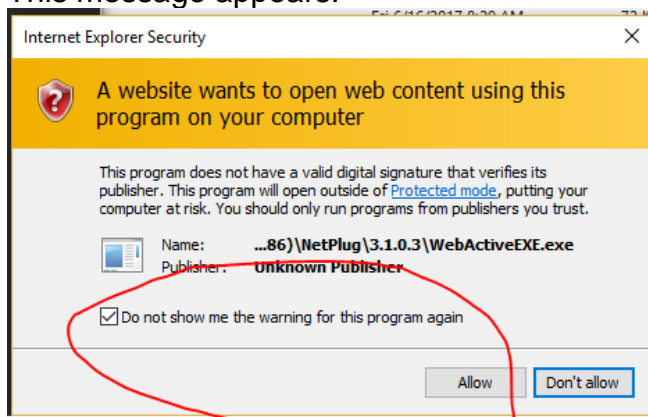


Click Run

Then Click **Allow**:

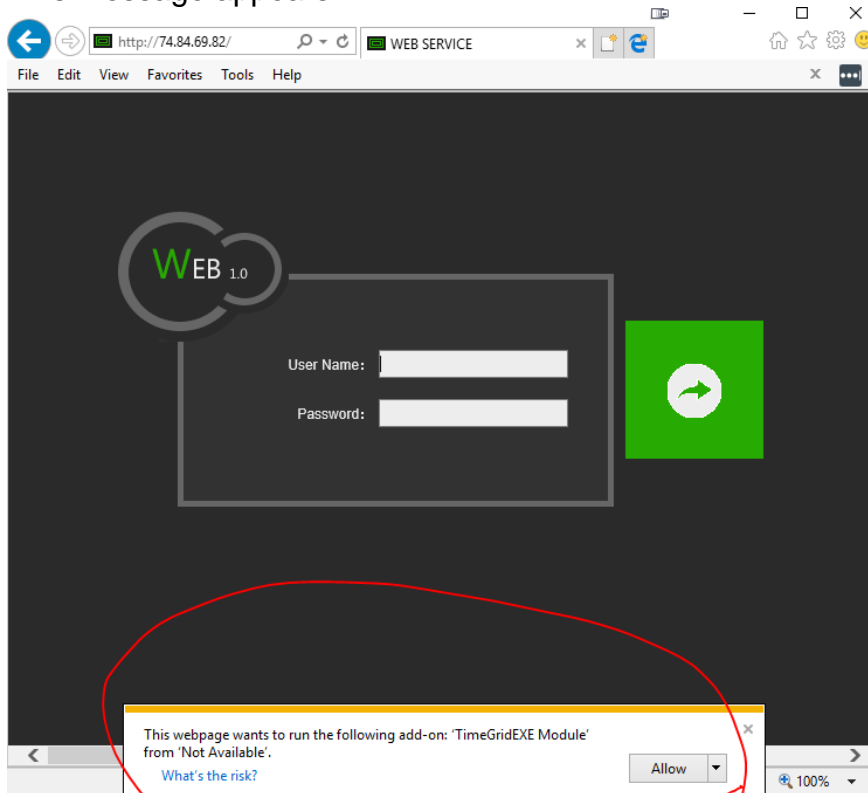


This message appears:

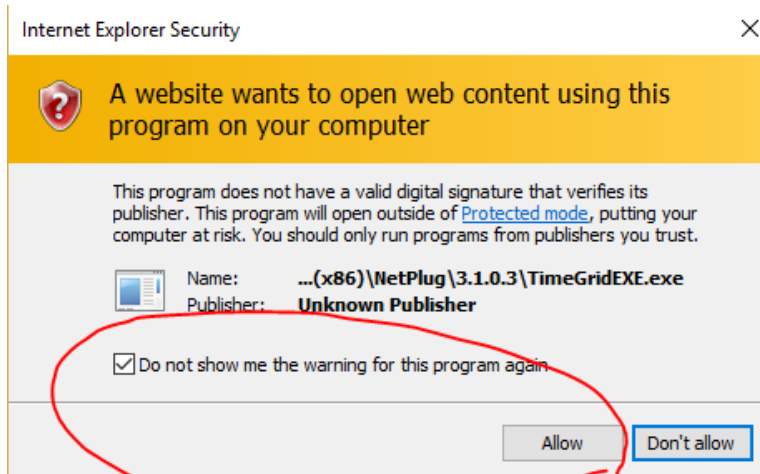


Check the box that says “Do not show me the warning for this program again – then click **ALLOW**

This message appears:

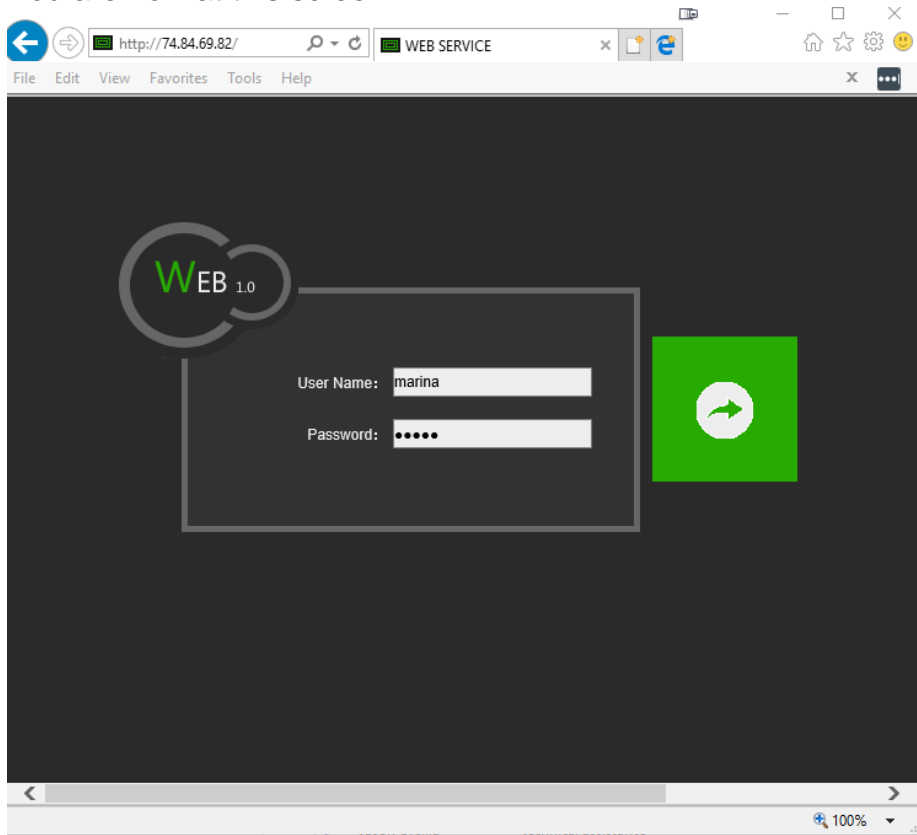


Click **ALLOW** and this warning shows up:



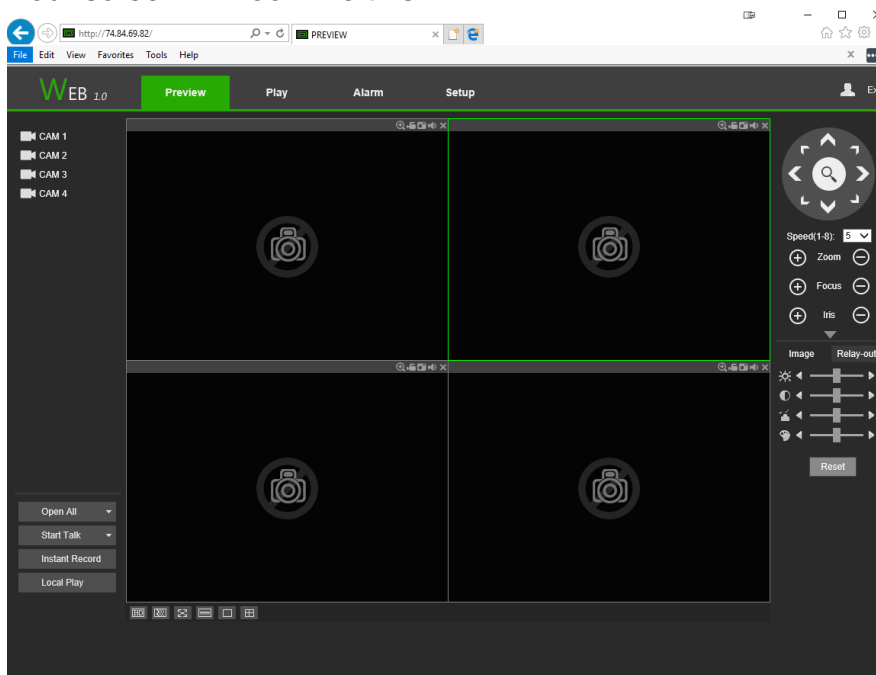
Again, Check the box that says “Do not show me the warning for this program again – then click **ALLOW**

You are now at this screen:

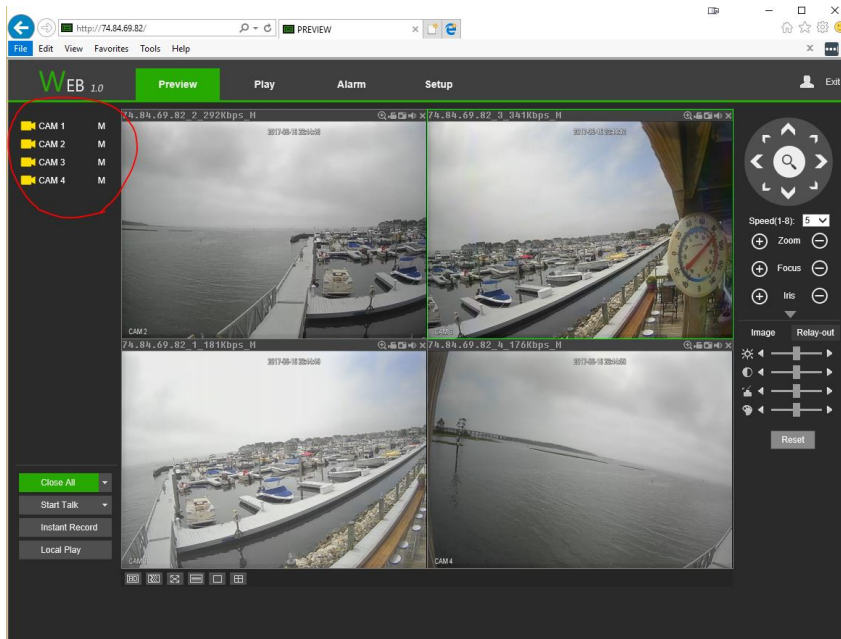
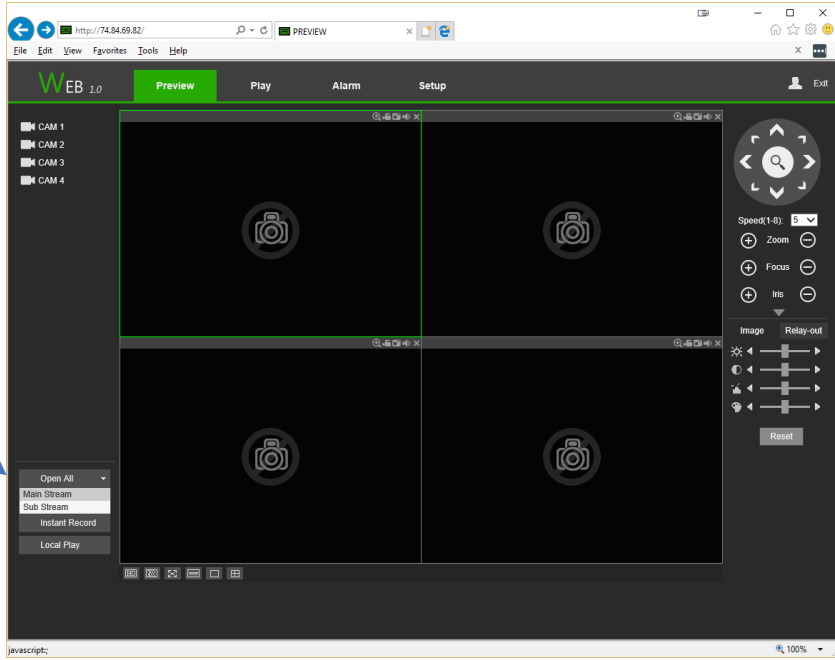


The Username is marina
And the Password is ppmac - all lower case

Your screen will look like this:



In order to make the cameras live click on **Open All** on the left-hand side and select **Main Stream**:



You should now see all four cameras